

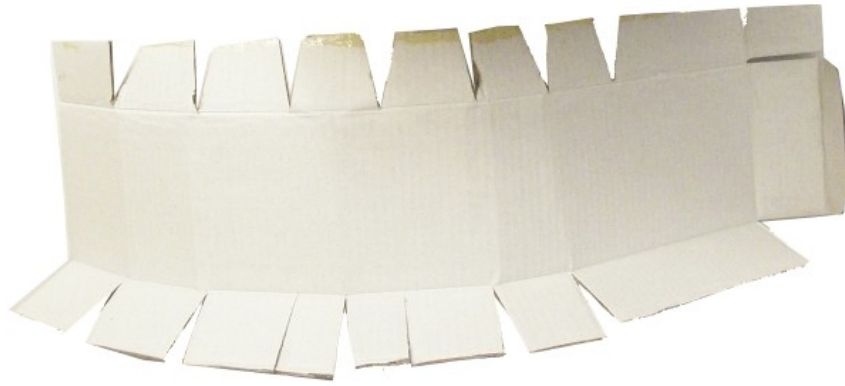
How To Box A Fragile Clay Orange Tree



At a Twin Cities craft fair, I purchased a beautiful orange tree made of clay. Here is how I shipped the fragile art across the country.



A. Select a box with adequate space for packing material.



B. Cut a cardboard structure with the middle part slightly taller than the pot of the plant, with tabs on the top and bottom. Experiment to get this step right. The idea is to secure the pot to the box and let the orange tree float in the balance of the box. The top tabs will be taped together with packing tape. The bottom tabs will be taped to a side of the box. The opening of the cardboard structure will open at the front of the box (where the recipient opens the box).



C. Open the bottom of the box. Set the orange tree in and surround the pot with the cardboard structure.



D. Use packing tape to tape the top tabs together and the bottom tabs to the side of the box. Use pieces of paper to make pull tabs for the ends of the tape, to make unwrapping easier for the recipient. Put bubble wrap into the bottom of the box and seal up the bottom. Carefully test the box to see if the inner structure holds the orange tree in place. If it doesn't, add more tape (or structures) or redo it. When everything holds the orange tree in place, add bubble wrap and any instructions to the top of the box, and seal it up with packing tape. Add "This Side Up" & "Open This Side" notes on the box.

Mark the box "Fragile."

It worked for my clay orange tree. I hope it will work for yours.

-Eric